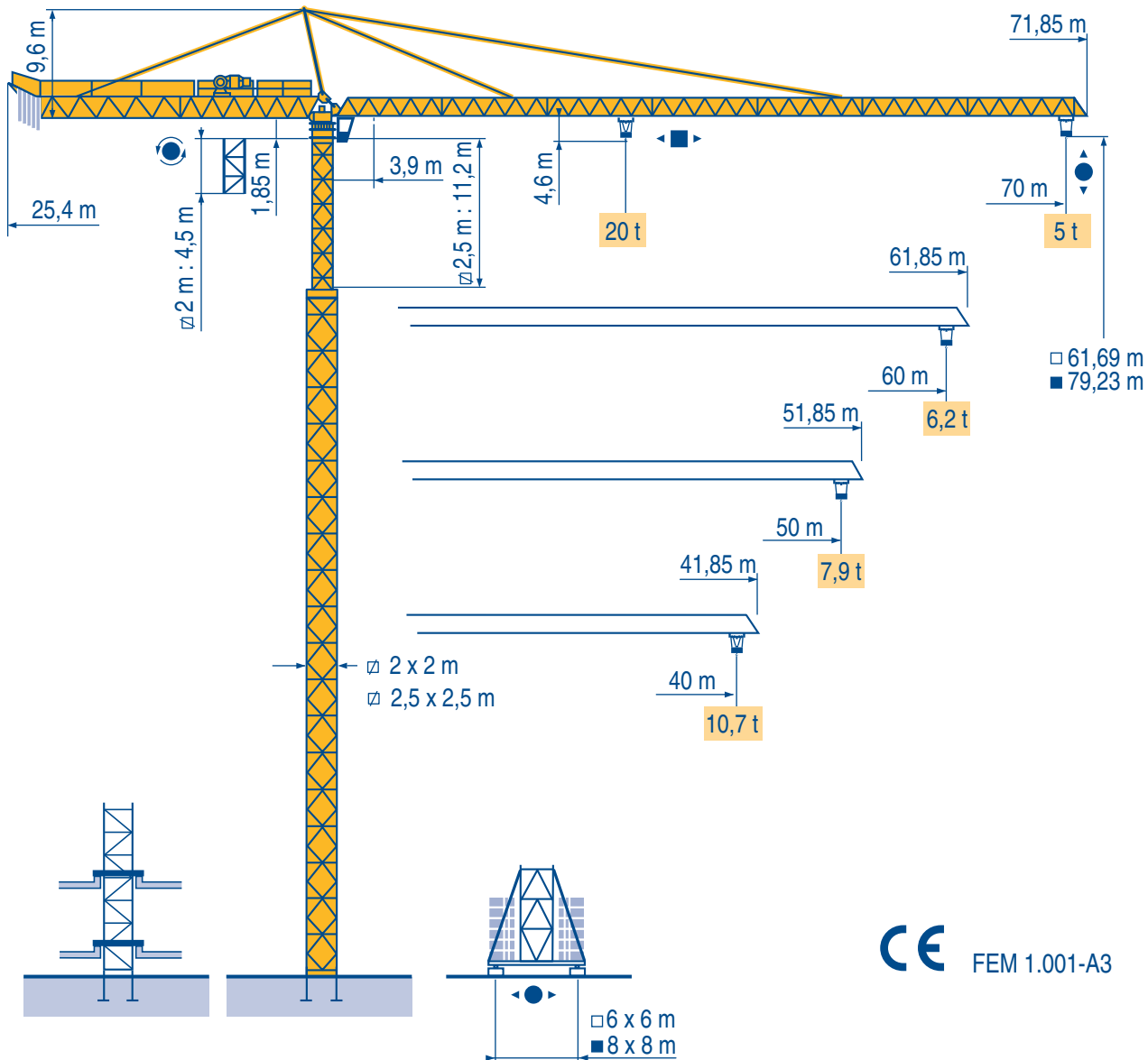


TOPKIT K5/50 C



LMZ 1

Igo
HD
HDM



HDT



GTMR



CITY CRANE



TOPKIT MD
MAXI MD



MAXI TOPKIT



Topless MDT



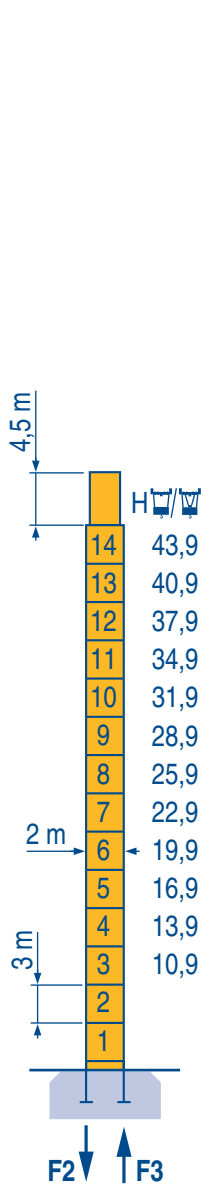
MR



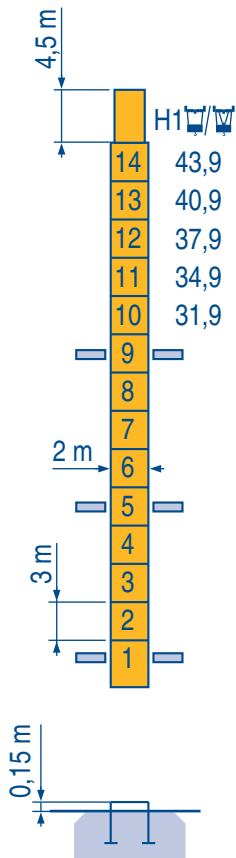
POTAIN 

2 m x 2 m

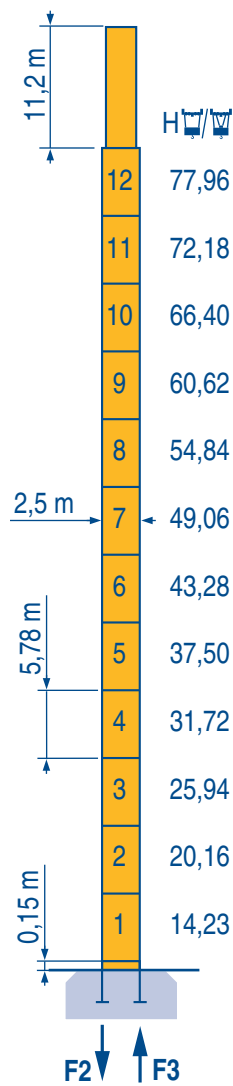
2,5 m x 2,5 m



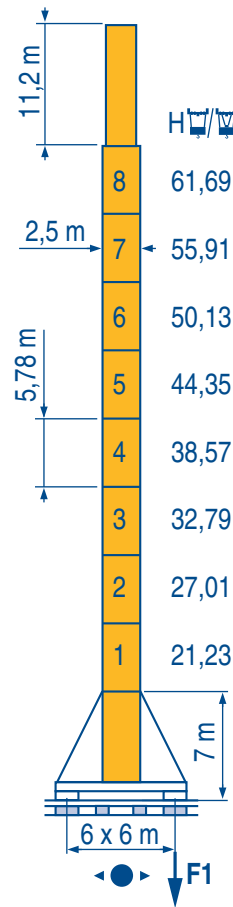
PA 690



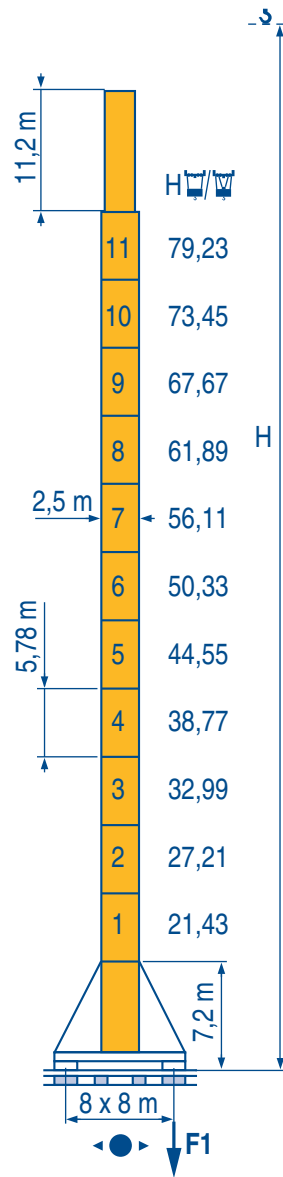
BA 68A



PA 852



XA 850



YA 851

F2 ● 176 t ■ 130 t
F3 ● 113 t ■ 77 t

LMZ 1
97 t



F2 ● 200 t ■ 196 t
F3 ● 127 t ■ 133 t

112 t

F1 ● 121 t ■ 94 t

117 t

F1 ● 110 t ■ 108 t

132 t

F Voir télescope sur dalles
● Réactions en service
■ Réactions hors service
P A vide sans lest (ni train de transport) avec flèche et hauteur maximum.

D Siehe Kletterkrane im Gebäude
Reaktionskräfte in Betrieb
Reaktionskräfte außer Betrieb
Ohne Last, Ballast (und Transportachse), mit Maximalausleger und Maximalhöhe.

GB See climbing crane
Reactions in service
Reactions out of service
Without load, ballast (or transport axes), with maximum jib and maximum height.

E Vea grua trepadora
Reacciones en servicio
Reacciones fuera de servicio
Sin carga, sin lastre, (ni tren de transporte), flecha y altura máxima.

I Consultare gru in cavedio
Reazioni in servizio
Reazioni fuori servizio
A vuoto, senza zavorra (ne assali di trasporto) con braccio massimo e altezza massima.

P Ver telescopagem sobre lages
Reações em serviço
Reações fora de serviço
Sem carga (nem trem de transporte)-sem lastro com lança e altura máximas.

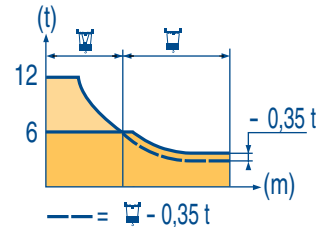
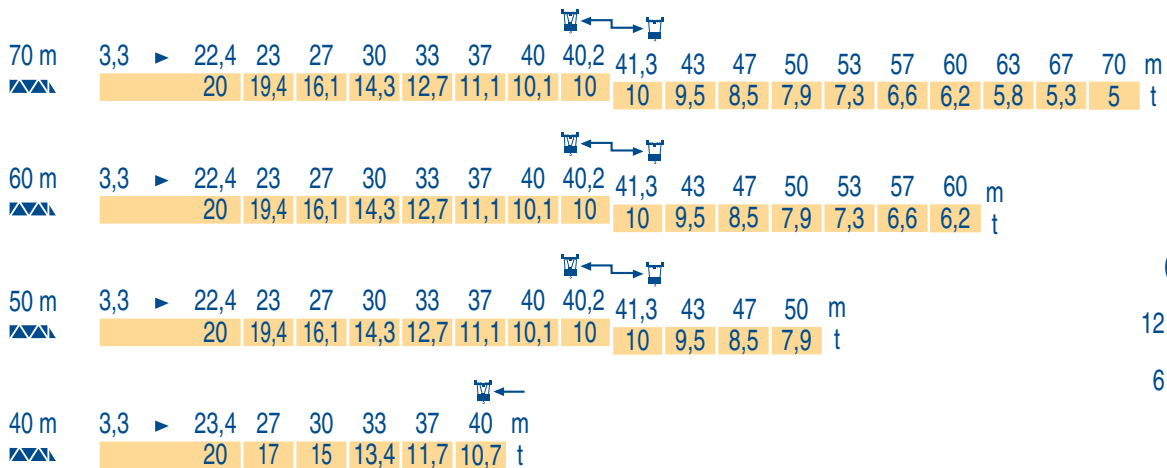
Courbes de charges
Lastkurven



Load diagrams
Curvas de cargas



Curve di carico
Curva de cargas



LMZ1

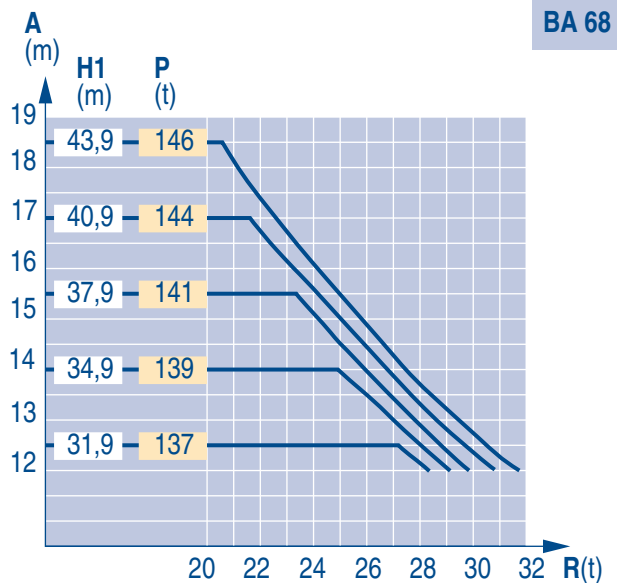
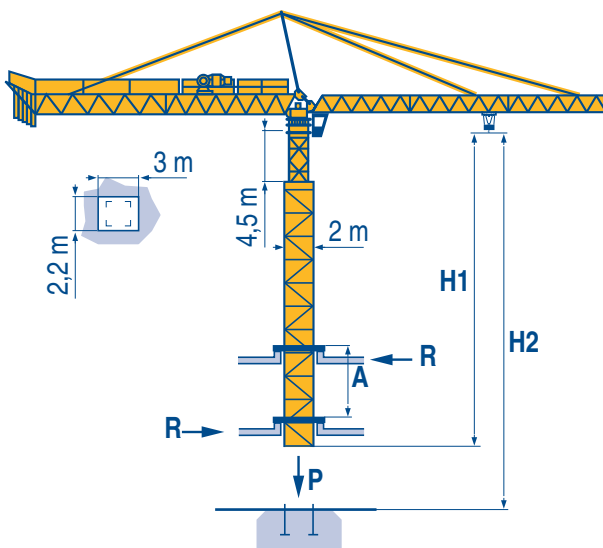
Télescopage sur dalles
Kletterkrane im Gebäude



Climbing crane
Telescopage gruas trepadoras



Gru in cavedio
Telescopagem sobre lages



BA 68 A

120 LMD 50S

H2	272 m	136 m
----	-------	-------

LMZ 1

A	Distance entre cadres	F	Abstand zwischen den Rahmen	D	Distance between collars	GB	Distancia entre marcos	E	Distanza fra i telai	I	Distância entre quadros	P
H1	Hauteur grue		Kranhöhe		Crane height		Altura grúa		Altezza gru		Altura da grua	
P	Poids de la grue (en service)		Krangewicht (in Betrieb)		Crane weight (in service)		Peso de la grúa (en servicio)		Peso della gru (in servizio)		Peso da grua (em serviço)	
R	Réaction horizontale		Horizontalkräfte		Horizontal reaction		Reaccion horizontal		Reazione orizzontale		Reacção horizontal	

TOPKIT K5/50 C

POTAIN

												ch - PS hp	kW		
	150 LCC 50	m/min t	52 → 10	62 → 7,5	78 → 5	104 → 2,5	125 → 1,25	26 → 20	31 → 15	39 → 10	52 → 5	63 → 2,5	150	110	520 m > 520
	15 DRC 8	m/min	0 - 4 → 43 - 86									14	10,3		
	RTV	tr/min U/min rpm	0 → 0,7									2 x 12	2 x 9		
	XA 850 RT 664 A2B - 2V R 20 m	m/min	16 - 32									6 x 7	6 x 5,2		
	YA 851 RT 664 A2B - 2V R 32 m	m/min	16 - 32									6 x 7	6 x 5,2		
CEI 38	IEC 38	kVA													
400 V (+6% -10%) 50 Hz		150 LCC 50 : 190 kVA					84/534 - 87/405								

LMZ 3

	Levage	F	Heben	D	Hoisting	GB	Elevación	E	Sollevamento	I	Elevação	P
	Distribution		Katzfahren		Trolleying		Distribución		Ditribuzione		Distribuição	
	Orientation		Schwenken		Slewing		Orientación		Rotazione		Rotação	
	Translation		Kranfahren		Travelling		Traslación		Traslazione		Translação	
	Conforme aux directives CEE 84/534 et 87/405 sur le niveau acoustique		Gemäss EWG-Richtlinien 84/534 und 87/405 für den Schall-Leistungspegel		In compliance with the EEC 84/534 and 87/405 Instructions on noise level		Conforme con las directivas CEE 84/534 y 87/405 sobre el nivel acustico		Conforme alle direttive CEE 84/534 e 87/405 sul livello acustico		Conforme as directivas CEE 84/534 e 87/405 sobre o nível acústico	
	Nous consulter		Auf Anfrage		Consult us		Consultarnos		Consultateci		Consultar-nos	



Document commercial non contractuel. Pour toute information technique se référer à la notice correspondante

Unverbindliches Vertriebsdokument. Für technische Informationen, siehe die entsprechenden Anweisungen.

This commercial document is not legally binding. For any technical information, please refer to the corresponding instructions.

Documento comercial non contractuel. Para cualquier información técnica, ver la noticia correspondiente.

Documento commerciale non vincolante, per tutte le informazioni tecniche fare riferimento al catalogo istruzioni

Documento comercial não contratual. Para qualquer informação técnica complementar consultar as respectivas instruções

POTAIN

18.Rue de Charbonnières, B.P. 173
F-69132 ECULLY Cedex
Tél. (33)04.72.18.20.20
Fax (33)04.72.18.20.00
http://www.potain.com
E-mail : mkt@potain.fr



Manitowoc Crane Group

Deutschland
POTAIN GmbH Tel : 06.1.05.70.40
Italia
POTAIN S.p.A. Tel : 0.331.49.33.11
Portugal
POTAIN Portugal Tel : 22.968.08.89
Singapore
MANITOWOC POTAIN PTE LTD Tel : 227.15.50

Copyright.Reproduction interdite © POTAIN 1997

TOPKIT K5/50 C
Réf. 1997.44 LMZ 8